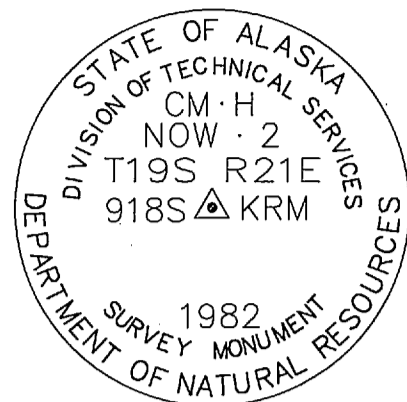


NOWITNA RIVER REMOTE RECREATIONAL CABIN SITES

INDEX SHEET

RECOVERED MONUMENTS

CM 2

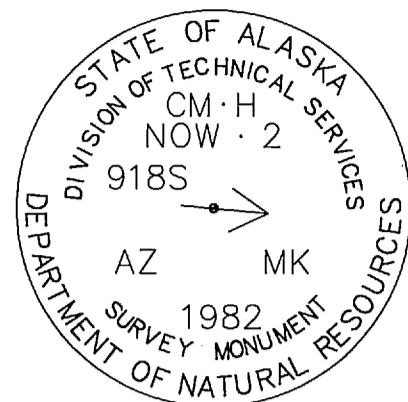


3 1/4" ALUMINUM DISK ON A 2 1/2" ALUMINUM POST FLUSH WITH THE GROUND

CM2

NAD 27: Lat. 63° 49' 46.60" N.
Long. 154° 45' 29.21" W.
NAD 83: Lat. 63° 49' 44.46" N.
Long. 154° 45' 37.75" W.

CM 2 AZ MK



3 1/4" ALUMINUM DISK ON A 2 1/2" ALUMINUM POST FLUSH WITH THE GROUND

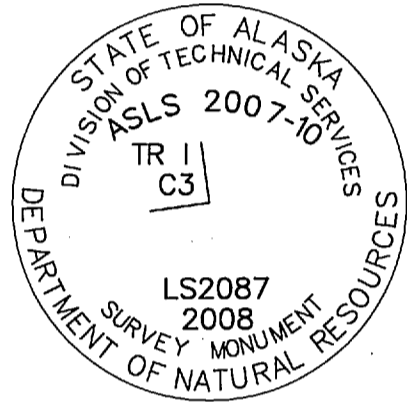
CM2 AZ MK

NAD 27: Lat. 63° 49' 47.95" N.
Long. 154° 45' 40.59" W.
NAD 83: Lat. 63° 49' 45.81" N.
Long. 154° 45' 49.13" W.

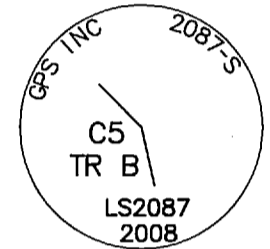
MONUMENTS SET THIS SURVEY

TYPICAL PRIMARY MONUMENT

TYPICAL SECONDARY MONUMENT



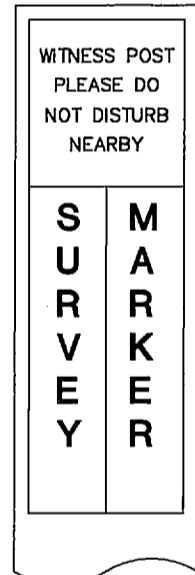
3 1/4" ALUMINUM DISK ON A 3/4" ALUMINUM PIPE, 36" LONG, WITH A MAGNET IN A GREY PLASTIC CASE ALONGSIDE THE PIPE



2" ALUMINUM CAP ON A 5/8" REBAR, 36" LONG

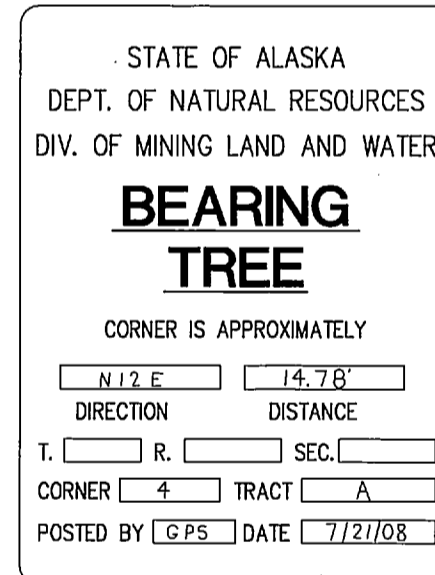
TYPICAL WITNESS POST

AN ORANGE FIBERGLASS REINFORCED CARBONITE POST, 6 FT. LONG SET AT A CARDINAL DIRECTION WITHIN 1 FT. OF ALL PRIMARY MONUMENTS



TYPICAL BEARING TREE TAG

AN YELLOW 4 1/2" x 6" ALUMINUM TAG SET AT CHEST HEIGHT TREES ARE NOT SCRIBED



NOTES

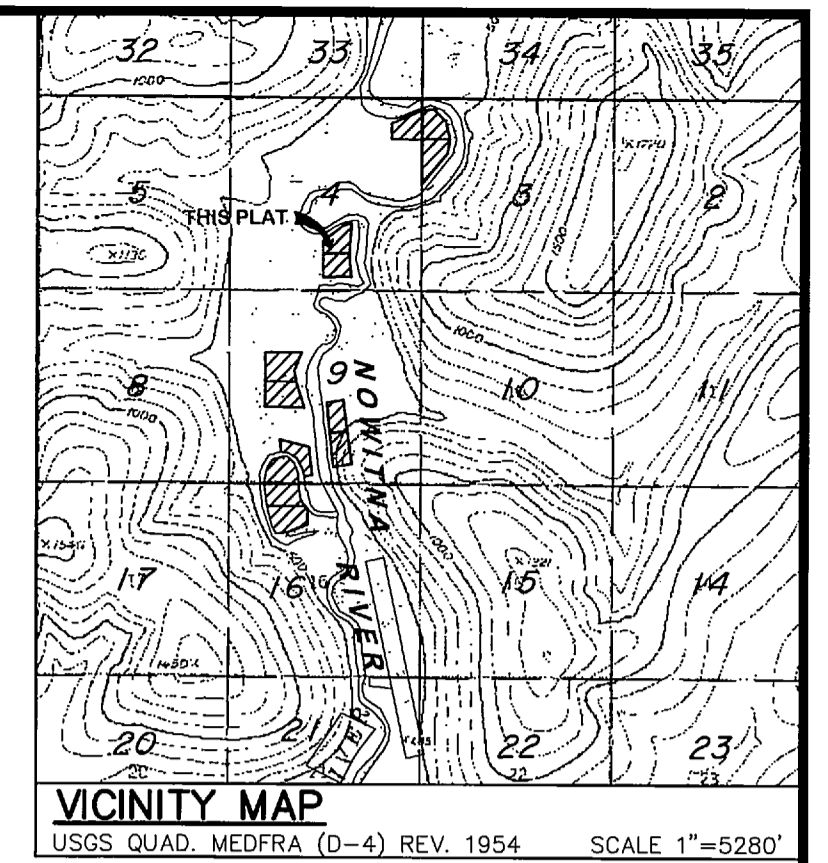
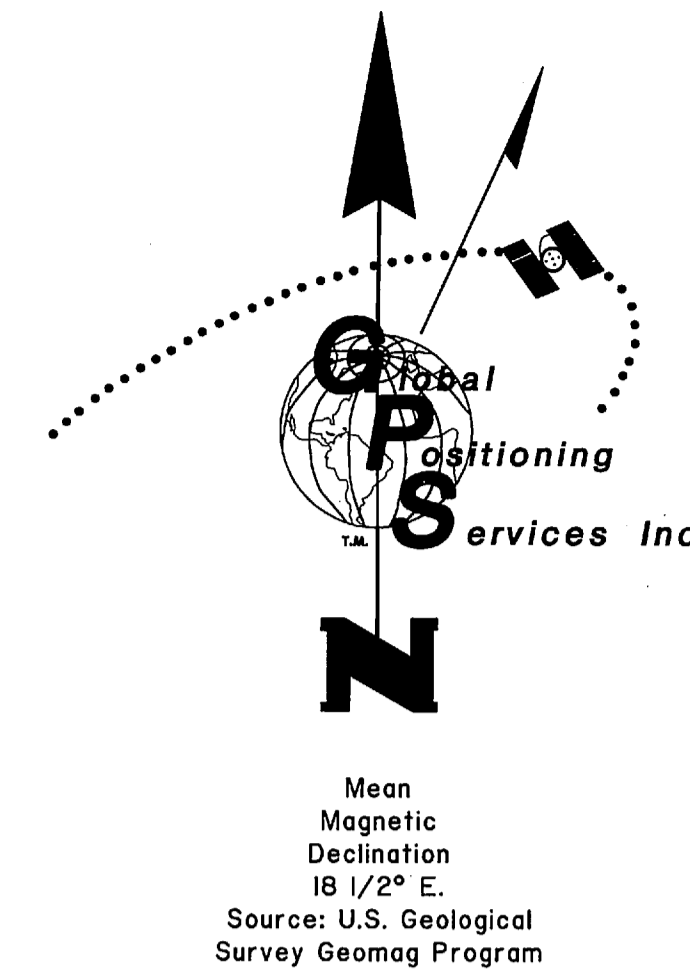
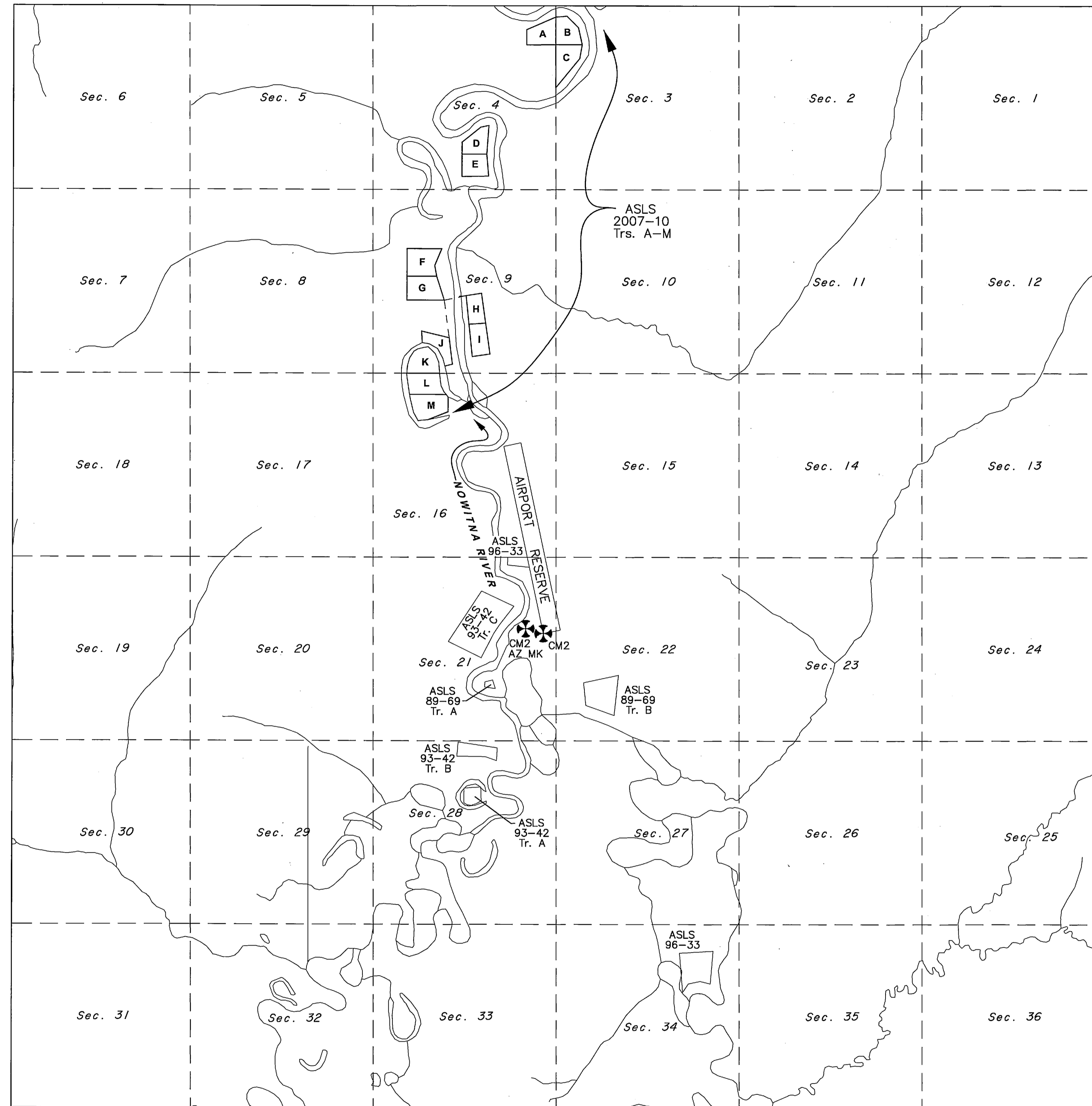
- THIS SURVEY WAS ACCOMPLISHED IN ACCORDANCE WITH AS 38.05.600, GSC 742, and RRCS SI 2007-10.
- THE BASIS OF BEARING FOR THIS PLAT WAS DETERMINED BY HIGH PRECISION GPS SURVEY; USING TRIMBLE SSE AND SSI 4000 CARRIER PHASE RECEIVERS, DIFFERENTIALLY CORRECTED AND PROCESSED USING GPSURVEY V2.35A SOFTWARE.
- BASIS OF COORDINATES WAS AN NGS OPUS SOLUTION FOR STATE OF ALASKA DEPARTMENT OF NATURAL RESOURCES CADASTRAL SURVEY MONUMENT CM-2. A TIE WAS MADE TO CM-2 AZMK FOR A QUALITY CONTROL CHECK. THE OFFICIAL SURVEY RECORD FOR THESE MONUMENTS IS THE CADASTRAL CONTROL SURVEY PLAT RECORDED IN THE NULATO RECORDING DISTRICT AS PLAT NO. 90-01.
- ALL BEARINGS SHOWN ARE TRUE BEARINGS AS ORIENTED TO THE BASIS OF BEARING AND DISTANCES SHOWN ARE REDUCED TO HORIZONTAL FIELD DISTANCES. BEARINGS AND DISTANCES SHOWN ON THIS PLAT ARE NAD 27. ALL BEARINGS ARE MEAN GEODETIC UNLESS OTHERWISE NOTED.
- THE ACCURACY OF THIS SURVEY IS GREATER THAN 1:5000.
- ALL PARCELS OF LAND OWNED BY THE STATE OF ALASKA, LOCATED WITHIN 50.00 FEET OF, OR BISECTED BY A SURVEYED OR PROTRACTED SECTION LINE, ARE SUBJECT TO A 50 FOOT (50') EASEMENT, ON EACH SIDE OF THE SECTION LINE, WHICH IS RESERVED TO THE STATE OF ALASKA FOR PUBLIC HIGHWAYS UNDER AS 19.10.010.
- THE EXISTING LESSEES' CLAIM CORNERS WERE RECOVERED AND USED TO CONTROL THE LOCATION OF THE TRACT BOUNDARIES.
- THE NATURAL MEANDERS OF THE LINE OF ORDINARY HIGH WATER (OHW) FORM THE TRUE BOUNDS OF TRACTS J-M. THE APPROXIMATE LINE OF OHW, AS SHOWN, IS FOR AREA COMPUTATIONS ONLY, WITH THE TRUE CORNERS BEING ON THE EXTENSION OF THE SIDELINES AND THEIR INTERSECTION WITH THE NATURAL MEANDERS.
- THERE IS A 100-FOOT BUILDING SETBACK FROM THE ORDINARY HIGH WATER LINE OF ALL WATER BODIES.

LEGEND:

- PRIMARY MONUMENT RECOVERED
- PRIMARY MONUMENT SET THIS SURVEY
- SECONDARY MONUMENT SET
- PROTRACTED SECTION LINES
- SURVEYED LINES
- TIE

SHEET INDEX

TRACT	ADL No.	SHEET
A	ADL 230447	2
B	ADL 230448	2
C	ADL 230449	2
D	ADL 230450	2
E	ADL 230451	2
F	ADL 230452	2
G	ADL 230453	2
H	ADL 229927	3
I	ADL 228350	3
J	ADL 229936	3
K	ADL 230454	3
L	ADL 230455	3
M	ADL 230456	3



CERTIFICATE OF OWNERSHIP AND DEDICATION

I, THE UNDERSIGNED, HEREBY CERTIFY THAT I AM THE DIRECTOR, DIVISION OF MINING, LAND AND WATER AND THAT THE STATE OF ALASKA IS THE OWNER OF ASLS 2007-10, AS SHOWN HEREON. I HEREBY APPROVE THIS SURVEY AND PLAT FOR THE STATE OF ALASKA, AND DEDICATE FOR PUBLIC OR PRIVATE USE AS NOTED, ALL EASEMENTS, PUBLIC UTILITY AREAS, AND RIGHTS-OF-WAY AS SHOWN AND DESCRIBED HEREON.

DATE: Jan 28, 2009 *Stanley E. Sears*
DIRECTOR, DIVISION OF MINING, LAND AND WATER

NOTARY'S ACKNOWLEDGEMENT
SUBSCRIBED AND SWORN TO BEFORE ME THIS 28th DAY OF JANUARY, 2009.

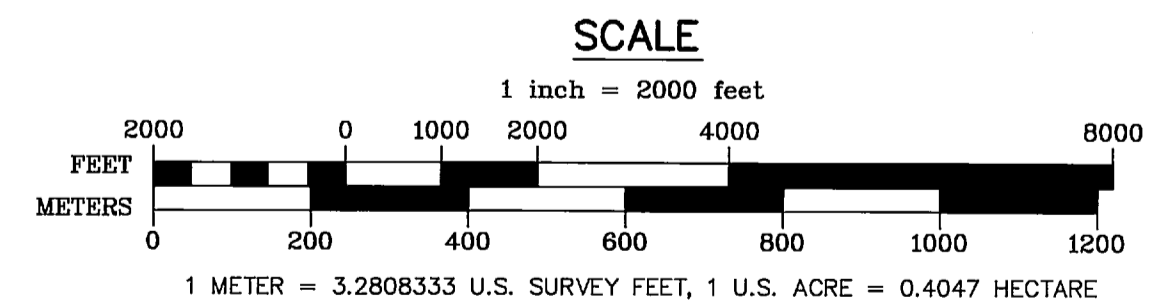
FOR: LEBALL JENNINGS
NOTARY PUBLIC FOR ALASKA
MY COMMISSION EXPIRES 12/31/2010

PLAT APPROVAL

THIS PLAT IS APPROVED BY THE COMMISSIONER OF THE DEPARTMENT OF NATURAL RESOURCES, OR THE COMMISSIONER'S DESIGNEE, IN ACCORDANCE WITH AS 40.15.

DATE: Jan 28, 2009
COMMISSIONER

BY APPROVAL OF THIS PLAT, THE COMMISSIONER OF THE DEPARTMENT OF NATURAL RESOURCES HEREBY ACCEPTS FOR PUBLIC USE AND PUBLIC PURPOSES THE REAL PROPERTY DEDICATED TO THE PUBLIC HEREON, INCLUDING EASEMENTS, RIGHTS-OF-WAY, ALLEYS AND ROADWAYS. THE ACCEPTANCE OF SUCH DEDICATED AREAS FOR PUBLIC USE AND PUBLIC PURPOSES DOES NOT OBLIGATE THE DEPARTMENT, ANY GOVERNING BODY, OR THE PUBLIC TO CONSTRUCT, OPERATE, MAINTAIN OR MANAGE IMPROVEMENTS.



Nulato 2009-1



SURVEYOR'S CERTIFICATE

I HEREBY CERTIFY THAT I AM PROPERLY REGISTERED AND LICENSED TO PRACTICE LAND SURVEYING IN THE STATE OF ALASKA, THAT THIS PLAT REPRESENTS A SURVEY MADE BY ME OR UNDER MY DIRECT SUPERVISION, THAT THE MONUMENTS SHOWN HEREON ACTUALLY EXIST AS DESCRIBED, AND THAT ALL DIMENSIONS AND OTHER DETAILS ARE CORRECT.

DATE: 8/25/08 *Stanley E. Sears*
REGISTERED LAND SURVEYOR NO. LS-2087

DATE OF SURVEY Beginning <u>June 24, 2008</u> Ending <u>July 28, 2008</u>	Stanley E. Sears Global Positioning Services, Inc. 2603 Blueberry Rd. Anchorage, Alaska 99503
STATE OF ALASKA DEPARTMENT OF NATURAL RESOURCES DIVISION OF MINING, LAND & WATER ANCHORAGE, ALASKA	
ALASKA STATE LAND SURVEY NO. 2007-10	
NOWITNA RIVER REMOTE RECREATIONAL CABIN SITES CREATING TRACTS A THROUGH M	
WITHIN PROTRACTED SECTIONS 3, 4, 9 AND 16, T. 19 S., R. 21 E. KATEEL RIVER MERIDIAN, ALASKA NULATO RECORDING DISTRICT	
DRAWN BY: LSV	APPROVAL RECOMMENDED
DATE: <u>8/25/08</u>	<i>W.C. Brown</i> FOR <u>1-21-09</u> STATEWIDE PLATTING SUPERVISOR DATE
SCALE: 1" = 2000'	CHECKED: _____ DNR FILE NO. ASLS 20070010