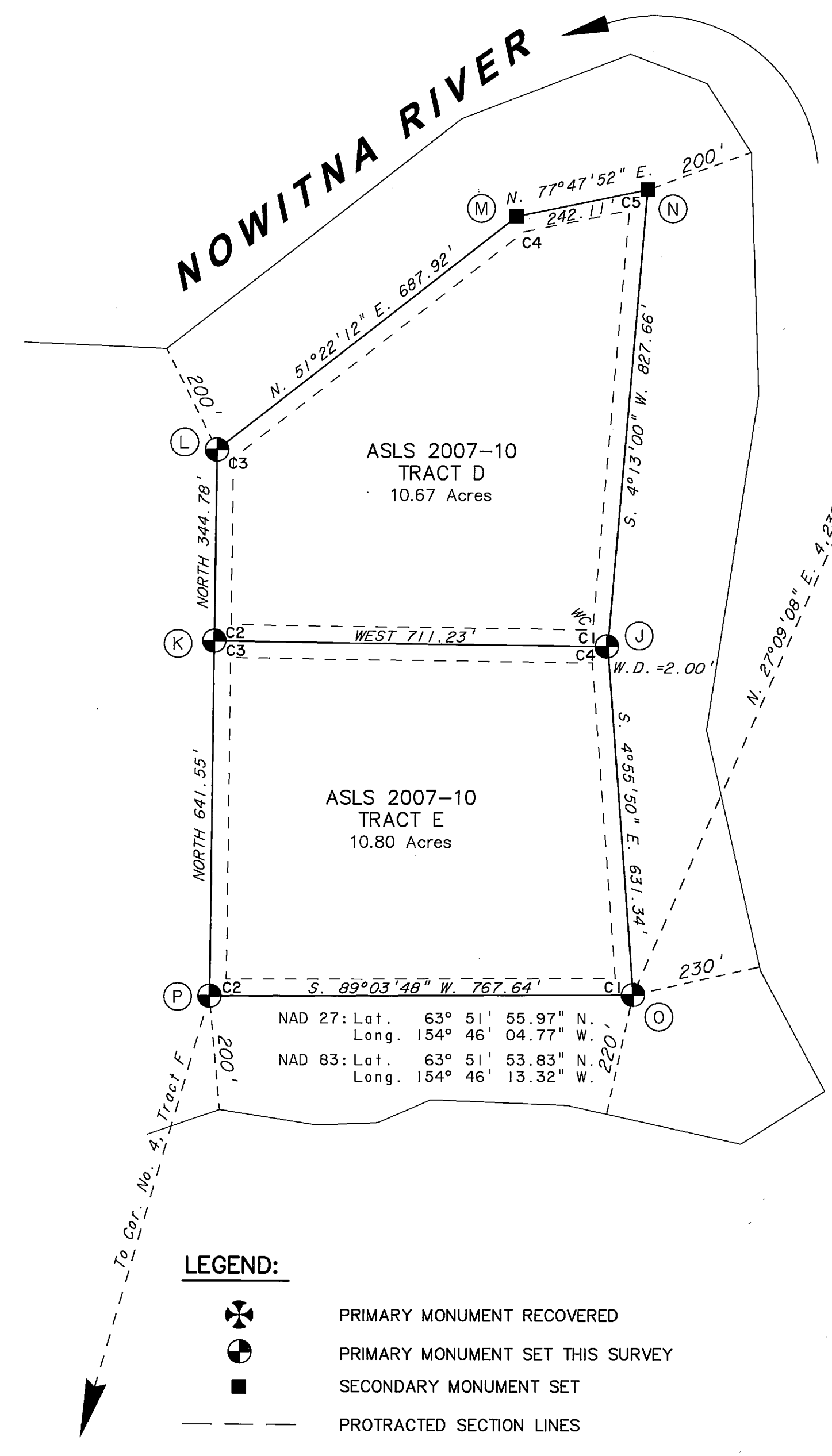


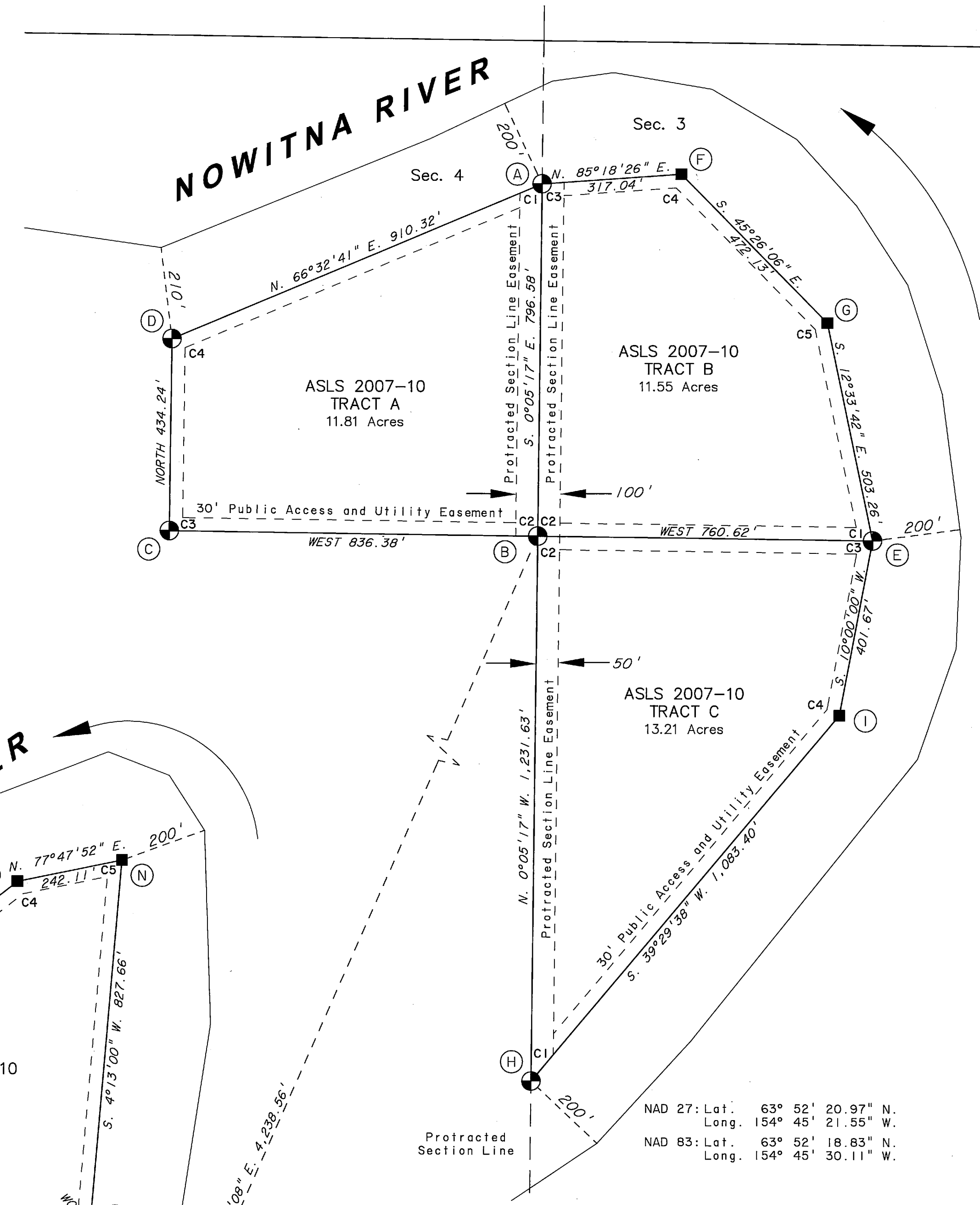
**MONUMENT INFORMATION**

Q	TR F C1 C4 TR G	Tract F, Corner 1, Tract G, Corner 4 30 ins. in the Ground, Witness Post West BT 1 4" Spruce N. 41" E., 19.88 ft. BT 2 5" Spruce S. 76" E., 51.17 ft. BT 3 4" Spruce S. 86" W., 13.66 ft.
R	TR F C2 C3 TR G	Tract F, Corner 2, Tract G, Corner 3 31 ins. in the Ground, Witness Post North BT 1 4" Spruce S. 50" E., 13.24 ft. BT 2 4" Spruce S. 32" W., 19.81 ft. BT 3 3" Spruce S. 71" W., 17.55 ft.
S	C3 TR F	Tract F, Witness Corner to Corner 3 29 ins. in the Ground, Witness Post South BT 1 3" Spruce S. 48" E., 17.55 ft. BT 2 4" Spruce S. 9" W., 20.35 ft. BT 3 3" Spruce N. 47" W., 15.55 ft.
T	C4 TR F	Tract F, Corner 4 30 ins. in the Ground, Witness Post West BT 1 11" Birch N. 26" E., 21.48 ft. BT 2 9" Spruce S. 45" E., 38.98 ft. BT 3 11" Spruce S. 49" W., 36.63 ft.
U	C5 TR F	Tract F, Corner 5 32 ins. in the Ground
V	TR G C1	Tract G, Corner 1 33 ins. in the Ground, Witness Post South BT 1 12" Spruce N. 8" E., 21.53 ft. BT 2 5" Spruce S. 64" E., 19.52 ft. BT 3 7" Spruce S. 35" W., 36.85 ft.
W	TR G C2	Tract G, Corner 2 28 ins. in the Ground, Witness Post South BT 1 5" Spruce N. 10" E., 12.98 ft. BT 2 5" Spruce S. 16" E., 20.32 ft. BT 3 6" Spruce N. 87" W., 14.30 ft.



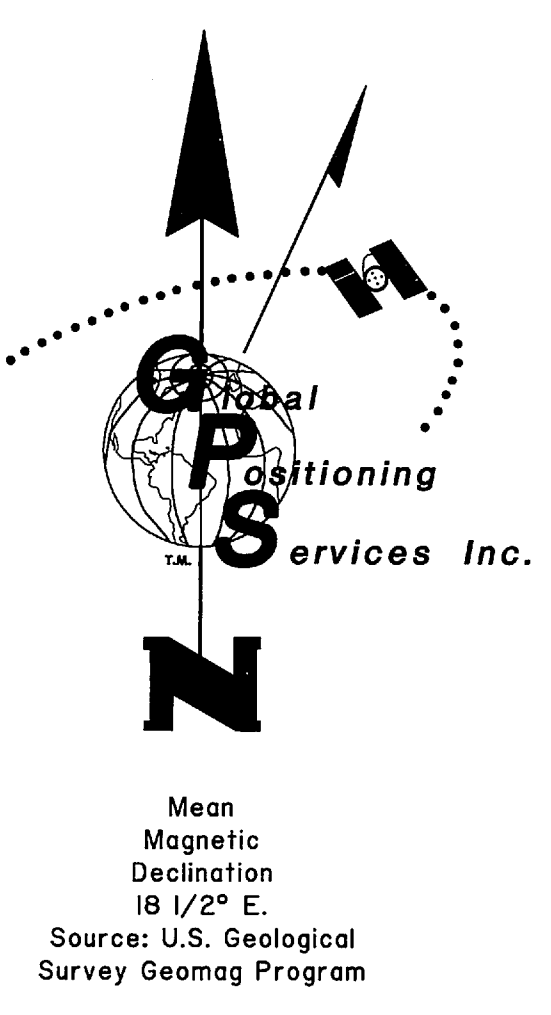
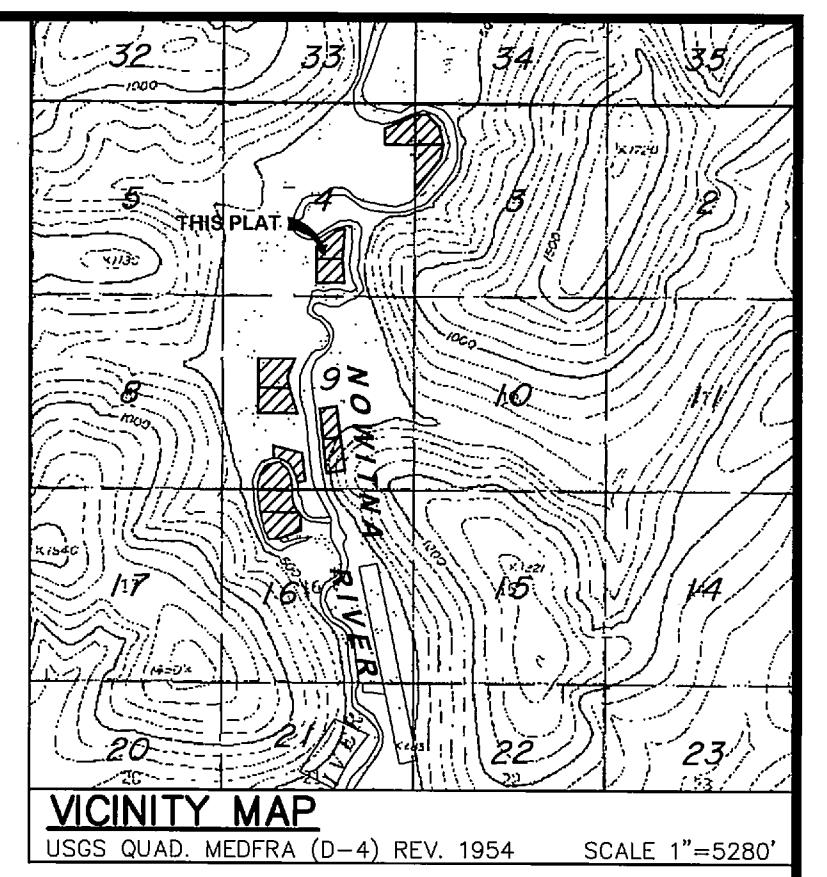
**LEGEND:**

- PRIMARY MONUMENT RECOVERED
- PRIMARY MONUMENT SET THIS SURVEY
- SECONDARY MONUMENT SET
- PROTRACTED SECTION LINES
- SURVEYED LINES
- TIE
- MONUMENT IDENTIFIER



**MONUMENT INFORMATION**

J	TR D C1 C4 TR E	Tract D, Witness Corner to Corner 1, Tract E, Witness Corner to Corner 4 30 ins. in the Ground, Witness Post West BT 1 12" Spruce S. 11" W., 20.02 ft. BT 2 7" Birch N. 86" W., 21.55 ft. BT 3 10" Spruce N. 9" W., 29.56 ft.
K	TR D C2 C3 TR E	Tract D, Corner 2, Tract E, Corner 3 30 ins. in the Ground, Witness Post East BT 1 7" Spruce N. 13" E., 8.33 ft. BT 2 5" Spruce N. 68" E., 8.97 ft. BT 3 7" Spruce S. 17" W., 6.23 ft.
L	C3 TR D	Tract D, Corner 3 30 ins. in the Ground, Witness Post South BT 1 4" Spruce N. 23" E., 31.57 ft. BT 2 4" Spruce S. 57" E., 19.87 ft. BT 3 4" Spruce S. 75" W., 13.37 ft.
M	C4 TR D	Tract D, Corner 4 28 ins. in the Ground
N	C5 TR D	Tract D, Corner 5 29 ins. in the Ground
O	TR E C1	Tract E, Corner 1 30 ins. in the Ground, Witness Post West BT 1 14" Birch N. 28" E., 26.71 ft. BT 2 10" Birch S. 27" W., 30.15 ft. BT 3 6" Spruce N. 29" W., 25.03 ft.
P	TR E C2	Tract E, Corner 2 32 ins. in the Ground, Witness Post South BT 1 11" Birch N. 52" E., 18.55 ft. BT 2 9" Spruce S. 55" W., 24.02 ft. BT 3 13" Spruce N. 2" W., 25.87 ft.

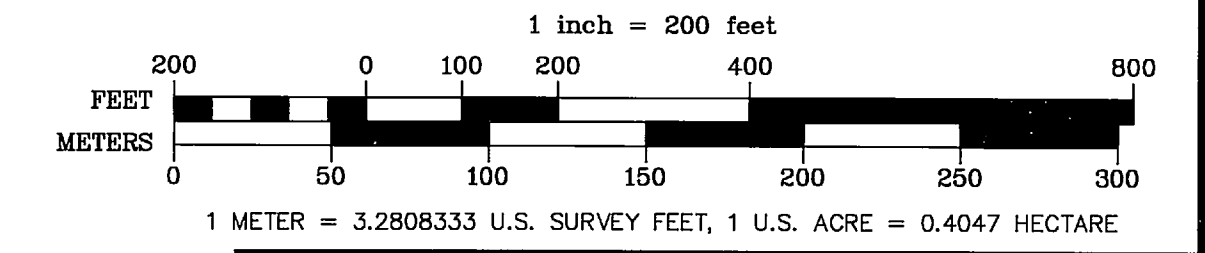


**MONUMENT INFORMATION**

A	C1 C3 TR A TR B	Tract A, Corner 1, Tract B, Corner 3 31 ins. in the Ground, Witness Post South BT 1 7" Birch N. 12" E., 19.18 ft. BT 2 8" Birch S. 67" E., 14.26 ft. BT 3 9" Birch S. 23" W., 18.83 ft.
B	TR A C2 C2 TR C	Tr. A, C2, Tr. B, C2, Tr. C, C2 31 ins. in the Ground, Witness Post North BT 1 4" Spruce N. 39" E., 15.71 ft. BT 2 5" Spruce N. 85" E., 18.33 ft. BT 3 4" Spruce S. 34" W., 12.28 ft.
C	TR A C3	Tract A, Corner 3 31 ins. in the Ground, Witness Post South BT 1 3" Spruce N. 55" E., 22.73 ft. BT 2 3" Spruce S. 11" E., 37.39 ft. BT 3 3" Spruce S. 61" W., 32.55 ft.
D	C4 TR A	Tract A, Corner 4 31 ins. in the Ground, Witness Post South BT 1 3" Spruce N. 84" E., 28.08 ft. BT 2 3" Spruce S. 89" W., 13.16 ft. BT 3 3" Spruce N. 2" W., 15.80 ft.
E	TR B C1 C3 TR C	Tract B, Corner 1, Tract C, Corner 3 31 ins. in the Ground, Witness Post West BT 1 15" Spruce N. 26" E., 18.50 ft. BT 2 5" Spruce S. 33" E., 27.93 ft. BT 3 12" Spruce S. 14" W., 46.02 ft.
F	C4 TR B	Tract B, Corner 4 30 ins. in the Ground
G	C5 TR B	Tract B, Corner 5 31 ins. in the Ground
H	TR C C1	Tract C, Corner 1 30 ins. in the Ground, Witness Post North BT 1 8" Spruce S. 75" E., 16.56 ft. BT 2 7" Spruce S. 12" W., 27.35 ft. BT 3 8" Birch N. 15" W., 29.35 ft.
I	TR C C4	Tract C, Corner 4 33 ins. in the Ground

THERE ARE NO LESSEES FOR TRACT A, ADL230447, TRACT B, ADL230448, TRACT C, ADL230449, TRACT D, ADL230450, TRACT E, ADL230451, TRACT F, ADL230452 AND TRACT G, ADL230453.

**SCALE**



DATE OF SURVEY Beginning June 24, 2008 Ending July 28, 2008	Stanley E. Sears Global Positioning Services, Inc. 2603 Blueberry Rd. Anchorage, Alaska 99503
STATE OF ALASKA DEPARTMENT OF NATURAL RESOURCES DIVISION OF MINING, LAND & WATER ANCHORAGE, ALASKA	
ALASKA STATE LAND SURVEY NO. 2007-10	
NOWITNA RIVER REMOTE RECREATIONAL CABIN SITES CREATING TRACTS A THROUGH M	
WITHIN PROTRACTED SECTIONS 3, 4, 9 AND 16, T. 19 S., R. 21 E. KATEEL RIVER MERIDIAN, ALASKA NULATO RECORDING DISTRICT	
DRAWN BY: LSV	APPROVAL RECOMMENDED
DATE: 8/25/08	STATEWIDE PLATTING SUPERVISOR DATE: 1-21-09
SCALE: 1" = 200'	CHECKED: DNR FILE NO. ASLS 20070010

Nulato 2009-1